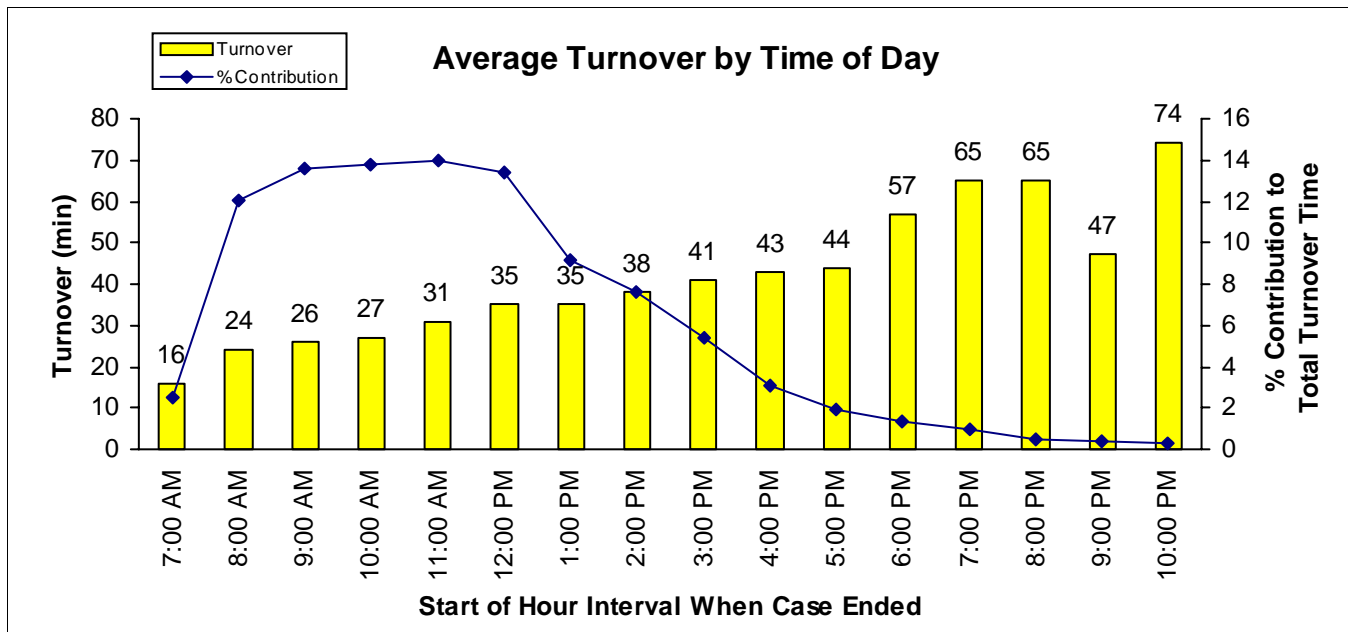


Memorial General

Max Turnover (minutes)	Avg Turnover (minutes)	Allocated (hours)	Underutilized (hours)	Overutilized (hours)	Cost (hours)
90	30.5	78.4	21.3	10.1	96.0
80	29.6	0.0	0.2	-0.3	-0.5%
70	28.5	0.0	0.5	-0.6	-1.1%
60	27.3	0.0	0.7	-0.9	-1.7%
50	25.9	-1.6	0.1	-0.7	-3.1%
45	25.1	-1.6	0.3	-1.0	-3.5%
40	24.1	-3.2	-0.5	-0.6	-4.7%
35	23.0	-3.2	-0.2	-1.0	-5.3%
30	21.6	-3.2	0.1	-1.3	-6.1%
25	19.9	-3.2	0.5	-1.8	-7.1%
20	17.5	-3.2	1.1	-2.4	-8.4%
10	9.9	-3.2	3.3	-4.3	-12.5%
0	0.0	-4.8	5.4	-5.7	-18.1%

The values in the top table are the daily average baseline values with the maximum turnover time between cases limited to 90 min. Savings listed in the second table are the change from the daily baseline hours and cost (expressed in units of regular time hours) with the maximum turnover time set at 90 min. This table represents the possible savings that could accrue from a reduction in the turnover time and/or delays between cases.



Each bar represents the average turnover during each hourly period of the day (e.g., 3:00 PM to 3:59 PM). The line indicates the % contribution to the total turnover time for the facility.

Cost Ratio = 1.75

Start Date: 01/01/2002 End Date: 06/30/2002

Facility: Memorial General

Dataset: DataMemorialGeneral