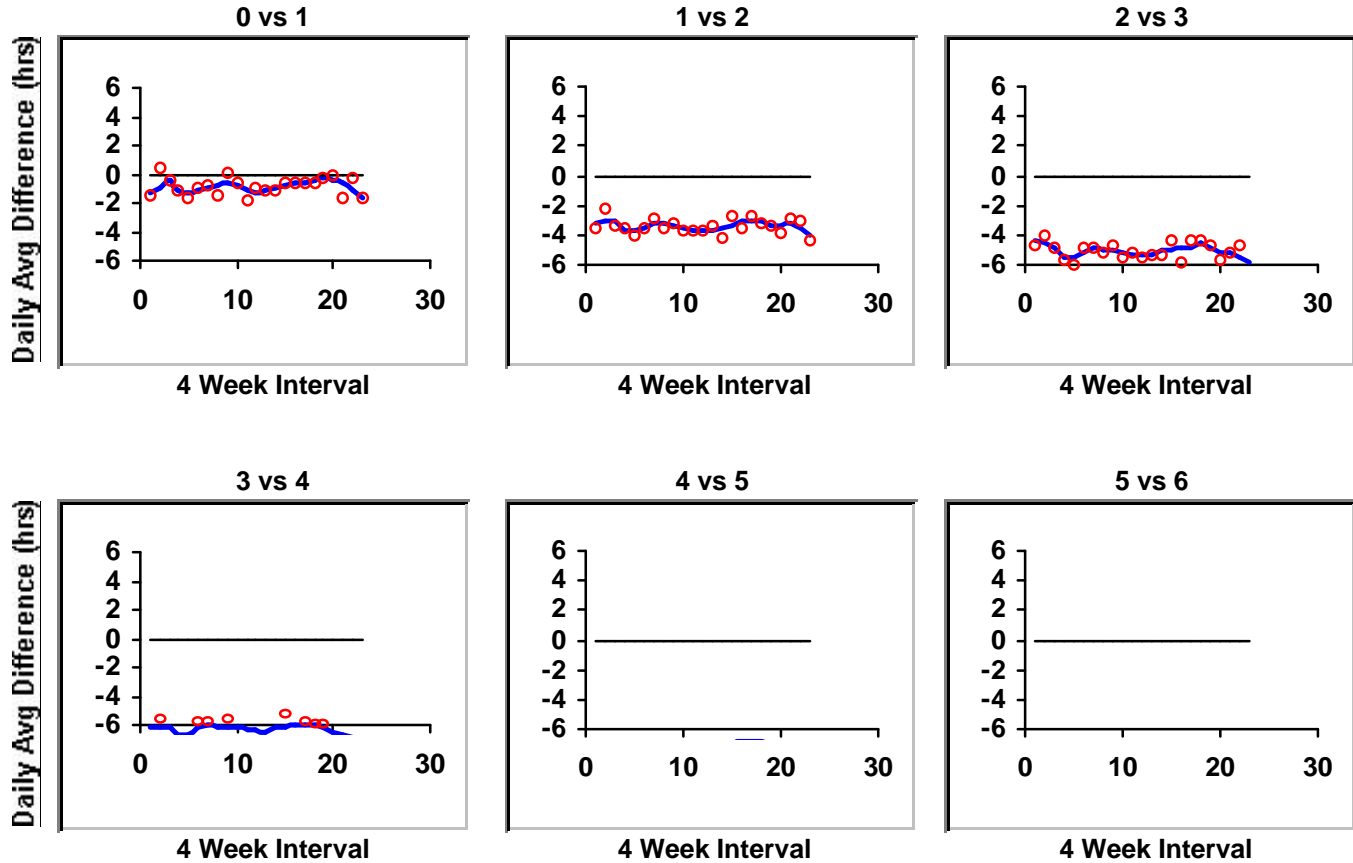


## Memorial General Hospital



Start Date            00:00:00  
 End Date             00:00:00  
 Annual Salary per OR   \$100,000  
 Overtime Ratio        1.75

Based on an annual salary per OR of \$100,000, a difference on one hour per day translates into a yearly cost of \$12,500

Algorithms developed by Franklin Dexter, MD, PhD

For detailed consultation, E-mail [Franklin-Dexter@Ulowa.edu](mailto:Franklin-Dexter@Ulowa.edu)